



RAISE YOUR SKILLS



www.yasi.abudhabi



www.facebook.com/yasi.abudhab



www.instagram.com/yasi.abudhabi



info@yasi.abudhabi



www.youtube.yasi.abudhabi



United Arab Emirates
Abu Dhabi

THE FOUNDER

Salem Al Mehairbi

Salem Al Mehairbi, the founder and chief designer of YASI, was born in Abu Dhabi the capital of the United Arab Emirates. Salem grew in a large family from a tribe known as seafarers.

Salem's father was one of the most known fishermen in all GCC region which made him the most suitable person to become the private captain of H.H Sheikh Zayed bin Sultan Al Nahyan "Former President of the United Arab Emirates" (may God have mercy upon him) for many years.

His hunger for the sea since childhood led him to gain as much information from his father as possible, learn all of the fishing art, develop his skills at a young age, and became one of the most known commercial fishermen in the region.

Salem's passion for fishing encouraged him to keep developing his skills and led him to travel to many countries to share knowledge and discover advanced fishing techniques. And after several trips to Japan and many hours in the sea with famous Japanese anglers, Salem decided to combine his experience in the sea



DESIGN & DEVELOPMENT

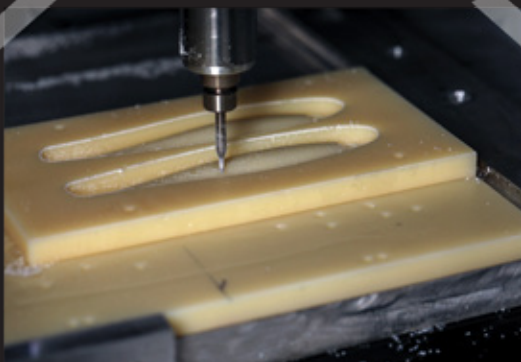
After many trials and prototypes, our lures were created from our experience and knowledge to mimic the natural bait action, shape, and color, to ensure that our products are effective and reliable.

With fishing in mind, we are always eager to create and satisfy the market needs, and we are looking for new ideas and concepts, from there we take our CAD software followed by simulating the hydrodynamic of the lure using the hydrodynamic modeling software.

Once the design passes the theoretical modeling test, we start printing the concept using high-resolution 3D printers to test the live functionality of the design.

keeping in mind the angler's needs we hand over the prototype to our testers to ensure that our idea is functional and effective.

Once approved we start the CNC cutting of ABS sheets which is the same materials as the master product to conduct more aggressive field testing where it might take weeks or months to fine-tune the prototype to achieve our desired goal.



YASI

Brand Yasi is based in Abu Dhabi, United Arab Emirates & founded by Salem Almehairbi (year). He is from one of the most renowned fishing family in the UAE, he was raised in a professional fishing Family and under the guidance of his father Captain Saeed Mohamed Al Mehairbi, who was one of the renowned fishermen in UAE.

His knowledge and great understanding of the emirates waters which is also backed up by the studies he has been pursuing for many years to build the best gears and equipment matching the UAE fishing environments, as we all know that every place has its own and unique requirements.



— RODS



Al Dhafra

CASTING SERIES



Al Yasat

JIGGING SERIES



BARBORROSSA

TROLLING SERIES



Al Dhafra

CASTING SERIES

TZ SERIES

YASI

Al Dhafra | CASTING SERIES

TZ SERIES

With casting in mind came the Al-Dhafra TZ, the first to hit the product line, purely designed & developed by Yasi team.

Al-Dhafra TZ has been equipped with the latest carbon fiber with Nano Technology materials available in the Japanese and international market today, and assembled with the incomparable Fuji guides...the (Fuji Torzite)...to go line in line with the rods characteristics by further enhancing its performance & giving it the highest sensitivity while fishing.

Yasi team has conducted many extensive tests to juice the limits out of the rods backbone & went beyond that and more over the past 20 months of developing the Al-Dhafra Blank series We are proud to say Al-Dhafra blanks are considered the best in its class of Light Cast series locally.

Considering fishing needs, Yasi team came up with series of rods to cover a wide range of the fishermen's requirements.

Categories

ADF TZ
70

ADF TZ
77

ADF TZ
79

ADF TZ
80





Descriptions

Model	Length	Lure Weight	PE Line	Guide	Reel Seat	Suitable Reel Size	ROD Weight	Section
ADF70-TZ	7 ft / 2.13 M	15G MAX	0.8 ~ 0.4	Fuji TZ	Fuji Vss	2500~1000	75G	4 & 2 PCs

REGULAR ACTION

FUJI TORZITE GUIDES

FUJI VSS REEL SEAT

EVA HANDLE





Descriptions

Model	Length	Lure Weight	PE Line	Guide	Reel Seat	Suitable Reel Size	ROD Weight	Section
ADF77-TZ	7.7 ft / 2.34 4M	25G MAX	1.2 ~ 0.6	Fuji TZ	Fuji Vss	3000~1500	100G	2PCs

REGULAR ACTION

FUJI TORZITE GUIDES

FUJI VSS REEL SEAT

EVA HANDLE





Descriptions

Model	Length	Lure Weight	PE Line	Guide	Reel Seat	Suitable Reel Size	ROD Weight	Section
ADF79-TZ	7.9 ft / 2.40 M	30G MAX	1.5 ~ 0.8	Fuji TZ	Fuji Vss	4000~2500	114G	2PCs

MEDIUM ACTION

FUJI TORZITE GUIDES

FUJI VSS REEL SEAT

EVA HANDLE





Descriptions

Model	Length	Lure Weight	PE Line	Guide	Reel Seat	Suitable Reel Size	ROD Weight	Section
ADF80-TZ	8 ft / 2.43 M	40G MAX	2.5 ~ 0.8	Fuji TZ	Fuji Vss	4000~3000	123G	2PCs

MEDIUM FAST ACTION

FUJI TORZITE GUIDES

FUJI VSS REEL SEAT

EVA HANDLE





Al Dhafra

CASTING SERIES

SHORE GAME

YASI

Al Dhafra | CASTING SERIES

SHORE GAME

Al-Dhafra shore cast & shore jigging are designed with a different and special bent curve for fishing from the beach. Where the Yasi Team built and strengthen the rod backbone to help the angler to cast and reach the highest distance possible. As also known that the shore game is horizontal fishing requires the special rod composition and bending with certain degree of curvature, so it was added touches and build the structure of the rods head in the front to increase the percentage of the hookup rate of the fish and help the angler to fight and control the fish to bring it easily to the land.

Al-Dhafra Shore Cast were supplied with Japanese Fuji Guides Frame. This type gave the rod a high casting distance and sensitivity performance. we have introduced several sizes of light fishing, including heavy fishing to meet the needs of the anglers in north and west of the state.

Al Dhafra ADF85 - 35G



Al Dhafra ADF95 - 50G




Descriptions

Model	Length	ROD Weight	Jig Weight	PE Line	Guide	Spinning Model	Section
ADF85 - 35G	8.5 ft / 2.59 M	138G	LURE 30G JIG 35G MAX	0.8 ~ 1.5	Fuji SIC	3000~4000	2 PCs

MEDIUM FAST ACTION	FUJI K SIC TITANIUM	FUJI VSS REEL SEAT	EVA HANDLE
--------------------	---------------------	--------------------	------------




Descriptions

Model	Length	ROD Weight	Jig Weight	PE Line	Guide	Spinning Model	Section
ADF95 - 50G	9.5 ft / 2.89 M	160G	LURE 40G JIG 50G MAX	1 ~ 2.5	Fuji SIC	3000~5000	2 PCs

FAST ACTION
FUJI K SIC TITANIUM
FUJI VSS REEL SEAT
EVA HANDLE


YASU

Al Dhafra | CASTING SERIES

MONSTER GAME

COMING SOON





Al Dhafra

CASTING SERIES

OFFSHOR GAME



Al Dhafra

CASTING SERIES

OFFSHORE GAME

AL DHAFRA OFFSHORE series: The LONGTAIL is our weapon to the big game field IN offshore and reef .casting

Using the highest Japanese quality TORAY carbon we have created a blank that has the highest level of sensitivity, power, castability as well ,the durability

For the handle we chose the best material reel seat from FUJI to give the angler the maximum comfort and confidence in every fight

Being in development since 2017 and tested to the extreme by the top anglers in the region, it proved to give you the full control in every

fight due to the well structured blank and guides alignment that resulted a perfect bent curve and a backbone that equally distributed

.throughout the rod

AL DHAFRA OFFSHORE LONGTAIL Tuna LongTail Tuna rod is equipped with SIC Ocean Guides and weight of 325 g, which makes it

ideal for lures, poppers, stickbaits weighing up to 90g which makes it the ultimate choice for boat and reef casting with enough power to

fight many species of fish such as long Tail Tuna, Mahi Mahi, AJ, GT

Al Dhafra 90G-ADF81LT



Al Dhafra 60G-ADF77KC





OFFSHORE GAME

Al Dhafra

CASTING SERIES

90G-ADF81LT



Model	Length	Rod Weight	Lure Weight	PE Line	Guides	Reel Size
90G-ADF81	1'8"	329G	90G Max	2-4	Fuji SIC KW	6000~8000
MEDIUM FAST ACTION		FUJI K SIC TITANIUM		FUJI VSS REEL SEAT		EVA HANDLE





OFFSHORE GAME

Al Dhafra

CASTING SERIES

60G-ADF77KC



Model	Length	Rod Weight	Lure Weight	PE Line	Guides	Reel Size
ADF77KC-60G	7'7"	159G	60G Max	1-3	Fuji SIC Ti	4000~5000
MEDIUM FAST ACTION		FUJI K SIC TITANIUM		FUJI VSS REEL SEAT		EVA HANDLE





Al Yasat

JIGGING SERIES

YASI

Al Yasat

JIGGING SERIES

Yes!! we have not forgotten vertical & slow jigging method. we have infused our wealth of knowledge of the Emirates sea's backed up by the studies we have been conducting for many months to build the best blank for jigging to match the UAE slow light jigging style of fishing.

Yasi Team was finally able to designed and developed a special rod that incorporates lightness & sensitiveness yet in its class. Proudly introducing (Al Yasat rod) which are manufactured from the highest quality carbon fiber materials and are unique to Emirati composition to give the best performance and consistency in jigging rhythm. Al Yasat come in two categories (Jigging) & (Slow Jigging), both types with several different sizes to correspond with varying depth and type of fishing needs. Ensuring all anglers needs are met and exceeded.

Al Yasat Light Jigging



Al Yasat Slow Pitch Jigging





Al Yasat

JIGGING SERIES

Light Jigging



Al Yasat

JIGGING SERIES

SPINNING MODEL

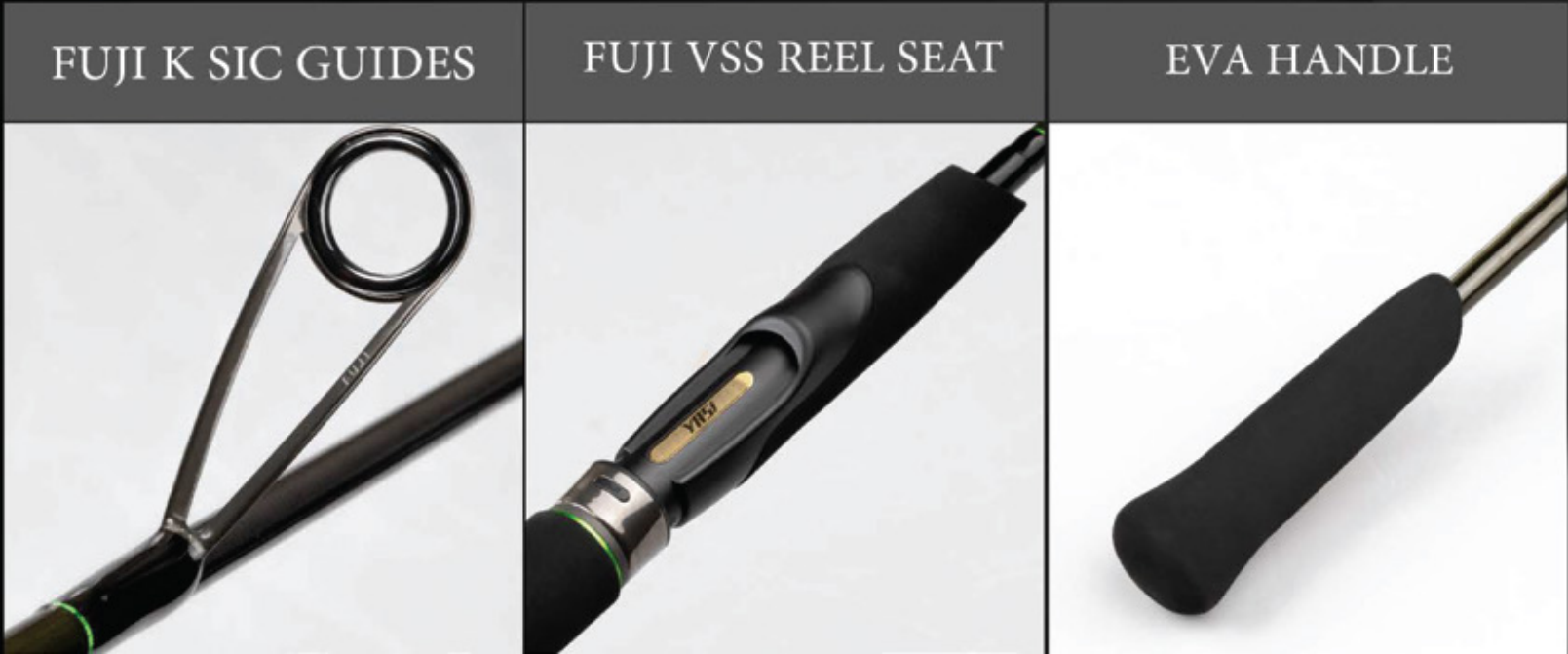
YS602 - 180G

LIGHT JIGGING



Descriptions

Model	Length	ROD Weight	Jig Weight	PE Line	Guide	Spinning Model	Section
YS602-180G	6.2 ft / 1.88 M	93G	60G - 180G	1.0 ~ 2.0	Fuji SIC	Spinning Model	1 PCs



JIGGING SERIES

SPINNING MODEL




YS603 - 80G

LIGHT JIGGING



Descriptions

Model	Length	ROD Weight	Jig Weight	PE Line	Guide	Spinning Model	Section
YS603-80G	6.3 ft / 1.92 M	86G	30G - 80G	0.8 ~ 1.5	Fuji SIC	Spinning Model	1 PCs

<p>FUJI K SIC GUIDES</p> 	<p>FUJI VSS REEL SEAT</p> 	<p>EVA HANDLE</p> 
--	--	---



Al Yasat

JIGGING SERIES

SPINNING MODEL

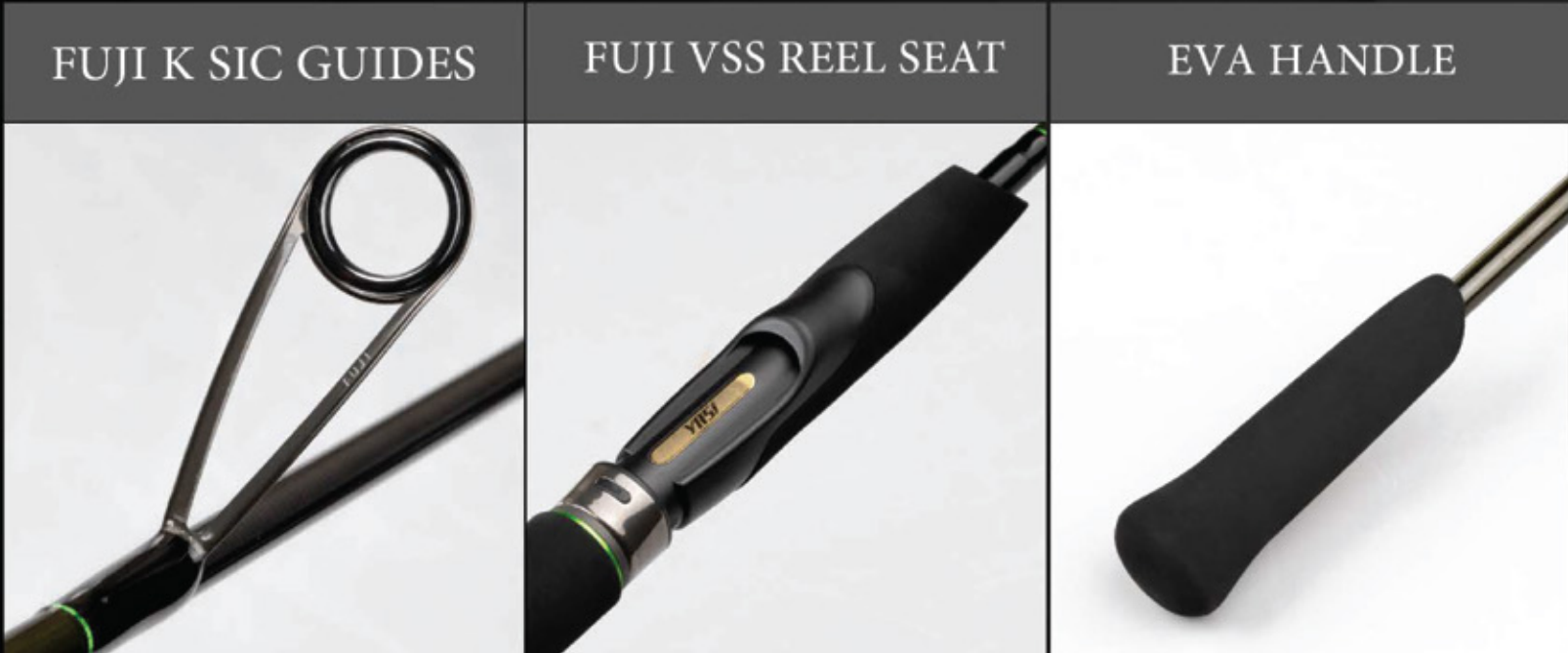
YS604 - 60G

LIGHT JIGGING



Descriptions

Model	Length	ROD Weight	Jig Weight	PE Line	Guide	Spinning Model	Section
YS604-60G	6.4 ft / 1.95 M	83G	20G - 60G	0.8 ~ 1.2	Fuji SIC	Spinning Model	1 PCs





Al Yasat

JIGGING SERIES

LIGHT JIGGING

SPINNING MODEL

YS605 - 30G



Descriptions

Model	Length	ROD Weight	Jig Weight	PE Line	Guide	Spinning Model	Section
YS605-30G	6.5 ft / 1.98 M	79G MAX	10G - 30G	0.6 ~ 1.0	Fuji SIC	Spinning Model	1 PCs





Al Yasat

JIGGING SERIES

Slow Pitch Jigging



Descriptions

Model	Length	ROD Weight	Jig Weight	PE Line	Guide	Reel Model	Section
YS600 - SJ60G	6 ft / 1.82 M	91G	60G MAX	0.6 ~ 1.0	Fuji SIC	Over Head	1 PCs

FUJI K SIC GUIDES

FUJI PTS REEL SEAT

EVA HANDLE





Descriptions

Model	Length	ROD Weight	Jig Weight	PE Line	Guide	Reel Model	Section
YS601 - SJ100G	6.1 ft / 1.85 M	106G	100G MAX	0.8 ~ 1.5	Fuji SIC	Over Head	1 PCs

FUJI K SIC GUIDES

FUJI PTS REEL SEAT

EVA HANDLE





Trolling Game

BARBORROSSA

YASU *Trolling Game*

BARBORROSSA

WITH GREAT SUCCESS IN OUR FLAGSHIP HIGH END ROD, WE DESIGNED BARBORROSSA RECORD BREAKER TO BE NEW ROD WITH THE NEW CHARACTERISTICS OF THE BEND CURVE.

THERE ARE 2 DIFFERENT MODELS TO MATCH THE LIVEBAIT AND LURE TROLLING FOR KING FISH AND BOTTON FISH LIKE BIG GROUPER, COBIA & OTHER SIMILAR SPECIES.

Categories

BARBORROSSA TYR66 T

BARBORROSSA TYR70 L



Trolling Game

BARBORROSSA

Trolling Model

TYR 66T



Descriptions

Model	Length	Weight	Mono Line	Guide	Recommended Reel Size
TYR 66T - 60LB	6.6 ft ~1.98m	—	30LB ~ 60LB	Sea Guide SS304	Avit EXW 30/2

Spiral Guides



C Guides



Cross Butt



Trolling Game

BARBORROSSA

Trolling Model

TYR 70L



Descriptions

Model	Length	Weight	Mono Line	Guide	Recommended Reel Size
TYR 70L - 40LB	7.0 ft ~ 2.10 m	—	20LB ~ 40LB	Sea Guide SS304	Avit LX G2 6.0 Single Speed

Spiral Guides



C Guides



Cross Butt





LURES —



MANCHOOS



MAGNET 110 sw



SILLS 125 sw

MANCHOOS SERIES

SINKING PENCIL



Manchoos Series is specially designed for salt water & topwater light game.

It has a unique and advanced action on the surface, specially when you slow jerk it or slow retrieve it, the lure will give you a treat live bait response.

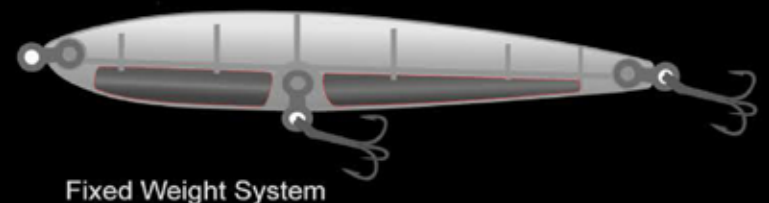
You can target on surface orange spotted trivially species.

On the shore and shallow water you can target bream & other rock fish species.

Achieve the highest performance we highly recommend matching this lure with a light casting rod not exceeding 15G as max lure weight.

TREVALLY TOP WATER GAME

● Depth 10cm ~ 30cm Max



Weight: 8G

Type : Sinking Pencil Center Balance Construction/Extreme Super Cast.

Hooks : 3X

Best Use : Trevally top water game.

MANCHOOS SERIES

Color Type



MS70S
000

Silver
Spotted
Sardine



MS70S
011

Real
Sardine

New



MS70S
022

Pearl Red
Head

New



MS70S
001

White
Tiger



MS70S
012

Brown
Sardine



MS70S
023

Golden
Trevally



MS70S
002

Rainbow
Blue



MS70S
013

Spotted
Trevally



MS70S
025

Lemon
Shell

New



MS70S
006

Rainbow
Pink



MS70S
015

Silver
Red
Head



MS70S
026

Blue
Red
Sardine

New



MS70S
007

Silver
Red
Tail



MS70S
017

Silver
Glow



MS70S
028

Black
Sardine

New



MS70S
009

Rainbow
Transperancy



MS70S
020

Golden
Red



MS70S
029

Rainbow
Red

New



MS70S
010

Red
Chrome



MS70S
021

Pink
Sardine

MAGNET 110 sw

HEAVY SINKING



MAGNET 110 sw designed for salt water game targeting either fast moving fish on surface or bottom fish in shallow water.

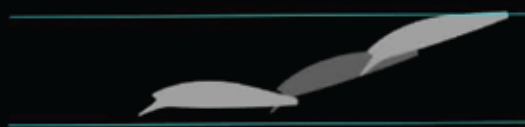
Magnet has transfer weight mechanism to let the anglers reach the highest casting distance and the dynamic shape gives the lure dart action when twitch it or jerk it.

To achieve the highest performance we highly recommend matching this lure with a light casting rod, not exceeding 40G as max lure weight.



Depth ~140cm Max

Tight Wobbling / Rolling Action



Transfer Weight System

Weight : 18G

Type : Fast Sinking transfer weight super cast

Hooks : 3X #4

Action : High Rolling / Wobbling Action

MAGNET 110 sw

Color Type



MG110 sw
001

White
Tiger



MG110 sw
012

Brown
Sardine



MG110 sw
023

Golden
Trevally



MG110 sw
005

Metallic
Green



MG110 sw
013

Spotted
Trevally



MG110 sw
025

Lemon Shell



MG110 sw
007

Silver Red
Tail



MG110 sw
017

Silver Glow



MG110 sw
026

Red Blue
Sardine



MG110 sw
009

Rainbow
Transparency



MG110 sw
021

Pink Sardine



MG110 sw
027

Rainbow
Fire
Transparency



MG110 sw
011

Real Sardine



MG110 sw
022

Pearl Red
Head

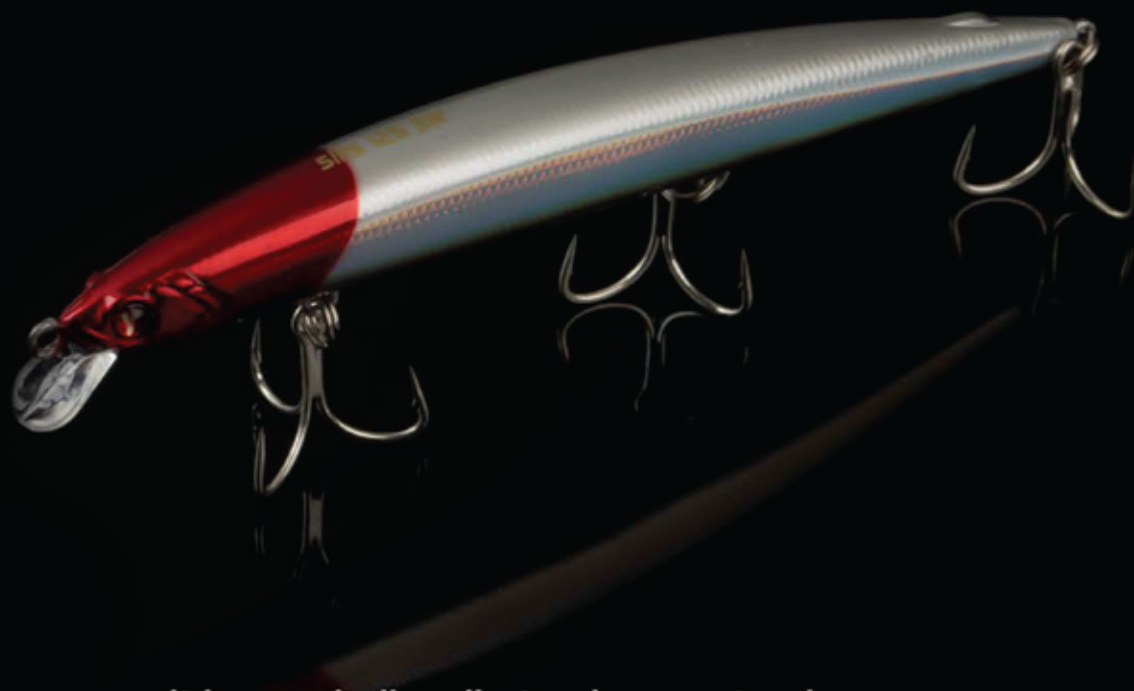


MG110 sw
028

Black Sardine

SILLS 125 sw

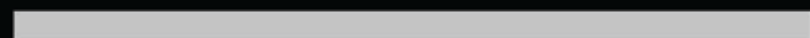
ROLLING ACTION



Silles 125 sw is specially designed for topwater game, it has a shallow lip to give a natural smooth action, Specially when you slow jerk it or slow retrieve it, the lure will give you real live bait response.

You can target on surface King Mackerel, Bonito and Trevally species on shore and shallow water you can target rock fish species.

To achieve the highest performance we highly recommend matching this lure with a light casting rod, not exceeding 40G as max lure weight.



Depth ~ 60 cm Max

Tight Wobbling / Rolling Action



Transfer Weight System

Weight : 16G

Type : Slow Sinking transfer weight balance / super cast

Hooks : 3X #4

Best Use : Shallow & Water Game



SILLS 125 sw

Color Type



S125 sw
01

White
Tiger



S125 sw
17

Silver
Glow



S125 sw
09

Rainbow
Transparency



S125 sw
19

Yello
Sardine



S125 sw
11

Real
Sardine



S125 sw
21

Pink
Sardine



S125 sw
12

Brown
Sardine



S125 sw
22

Green Sills



S125 sw
13

Spotted
Trevally



S125 sw
25

Lemon
Shell



S125 sw
15

Silver Red
Head



S125 sw
26

Blue Red
Sardine



S125 sw
16

Pink
Sardine



S125 sw
28

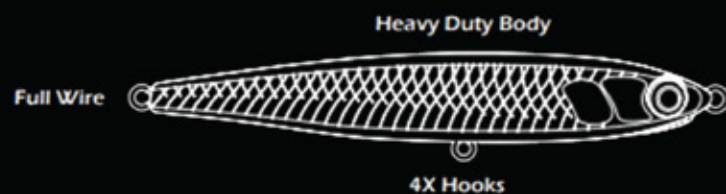
Black
Sardine



YASI



ANCHOVY PEN





ANCHOVY SERIES

ANCHOVY PEN 70S

Weight	14 G
Length	70 mm
Type	Fast Sinking
Hooks	4X # 10

ANCHOVY PEN 90S

Weight	29 G
Length	90 mm
Type	Fast Sinking
Hooks	4X # 6

ANCHOVY PEN 110S

Weight	39 G
Length	110 mm
Type	Fast Sinking
Hooks	4X # 4



ANCHL-WT 01
White Tiger



ANCHL-GS 02
Green Sardine



ANCHL-BLU 03
Blue Chrome



ANCHL-BLK 04
Black Chrome



ANCHL-VAN 05
Vanilla



ANCHL-RDL 06
Red Line



YAS



SHOT 65

Length: 65mm
Weight: 16G
Hooks: 3X #10
Type: Fast Sinking
Depth: 40cm ~60c

shot 65 s

16G



**SHOT65
WT O1**

WHITE TIGER

Weight **16G**



**SHOT65
GS O2**

GREEN SARDINE

Weight **14G**



**SHOT65
RC O3**

RAINBOW COLOR

Weight **16G**



**SHOT65
OB O4**

OLIVE BLACK

Weight **16G**



**SHOT65
RSB O5**

**REAL SILVER
MINNOW**

Weight **16G**



**SHOT65
RH O6**

RED HEAD

Weight **16G**



SNAPPY 77S | 10.5G

Yasi Snappy 77S is created for shore and inshore light casting game targeting top water and bottom fish in the shallow areas. The shape and weight of the lure will help you achieve the best casting distance and it's designed to be Slow Sinking buoyancy to attract the fish.

Snappy has a fixed ball bearing weight mechanism to give a fast response in action and the dynamic shape gives the lure high sharp drifting and darting action with Twitching or Jerking.

To achieve the highest performance we highly recommend matching this lure with a Light Casting Setup.

Slow Sinking

Depth : 40 - 70cm Max



Weight: 10.5G

length: 7.7cm

Type: Slow Sinking

Hooks: 3X #10

Depth: 40 - 70cm Max

Fixed Weight Balance



Tight Wobbling/Rolling Action

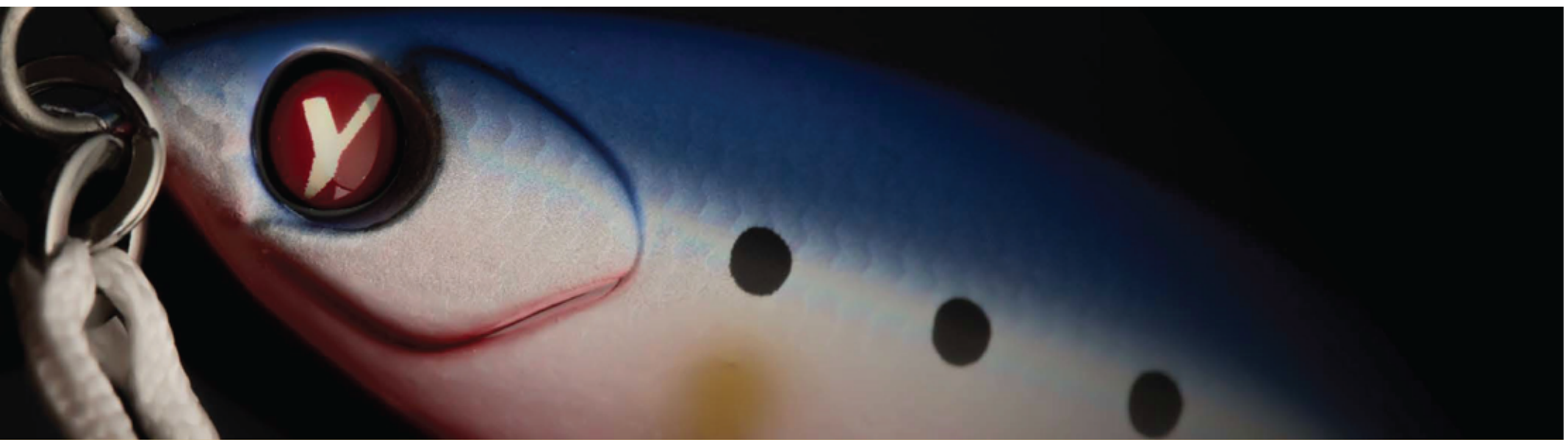


JIGS



YAS
Semi
Slow
Jig





YAS Semi Slow Jig

Yas Semi Slow is designed to attract bottom fish mimicking a slow falling injured bait fish, mainly targeting grouper and Snapper species.

In slow pitch quarter and half crank it smoothly rise though currents. On the fall it has a sliding/wobbling motion followed by a smooth glide making it a very easy jig to be spotted.

SIZE

10G



20G



27G



35G



45G



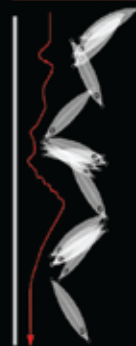
60G



80G



Falling action



As the jig falls, it sliding & fluttering

jerk action



Short Pitch crank

Performance table

Jig Falling	Fast
Sea Current	Strong
Jig Lifting Up	Heavy
Jig Drifting	Strong

Falling Speed



/yasi.abudhabi

WWW.YASI.ABUDHABI

#yasi_semi_slow



YAS Semi Slow Jig



YSS 01

Green Sardine

Weight 10G, 20G, 27G
35G, 45G, 60G
80G



Glow in the dark



YSS 07

Spotted Trevally

Weight 10G, 20G, 27G
35G, 45G, 60G
80G



YSS 02

Pink Sardine

Weight 10G, 20G, 27G
35G, 45G, 60G
80G



YSS 08

Silver Glow
Stripes

Weight 10G, 20G, 27G
35G, 45G, 60G
80G



YSS 03

Red Blue Sardine

Weight 10G, 20G, 27G
35G, 45G, 60G
80G



YSS 09

White Shell

Weight 10G, 20G, 27G
35G, 45G, 60G
80G



YSS 04

Real Sardine

Weight 10G, 20G, 27G
35G, 45G, 60G
80G



YSS 10

Rainbow Orange

Weight 10G, 20G, 27G
35G, 45G, 60G
80G



YSS 05

Yellow Sardine

Weight 10G, 20G, 27G
35G, 45G, 60G
80G



Glow in the dark



YSS 11

Orange Stripes
Glow

Weight 10G, 20G, 27G
35G, 45G, 60G
80G



YSS 06

Gray Mullet

Weight 10G, 20G, 27G
35G, 45G, 60G
80G



Glow in the dark



YSS 12

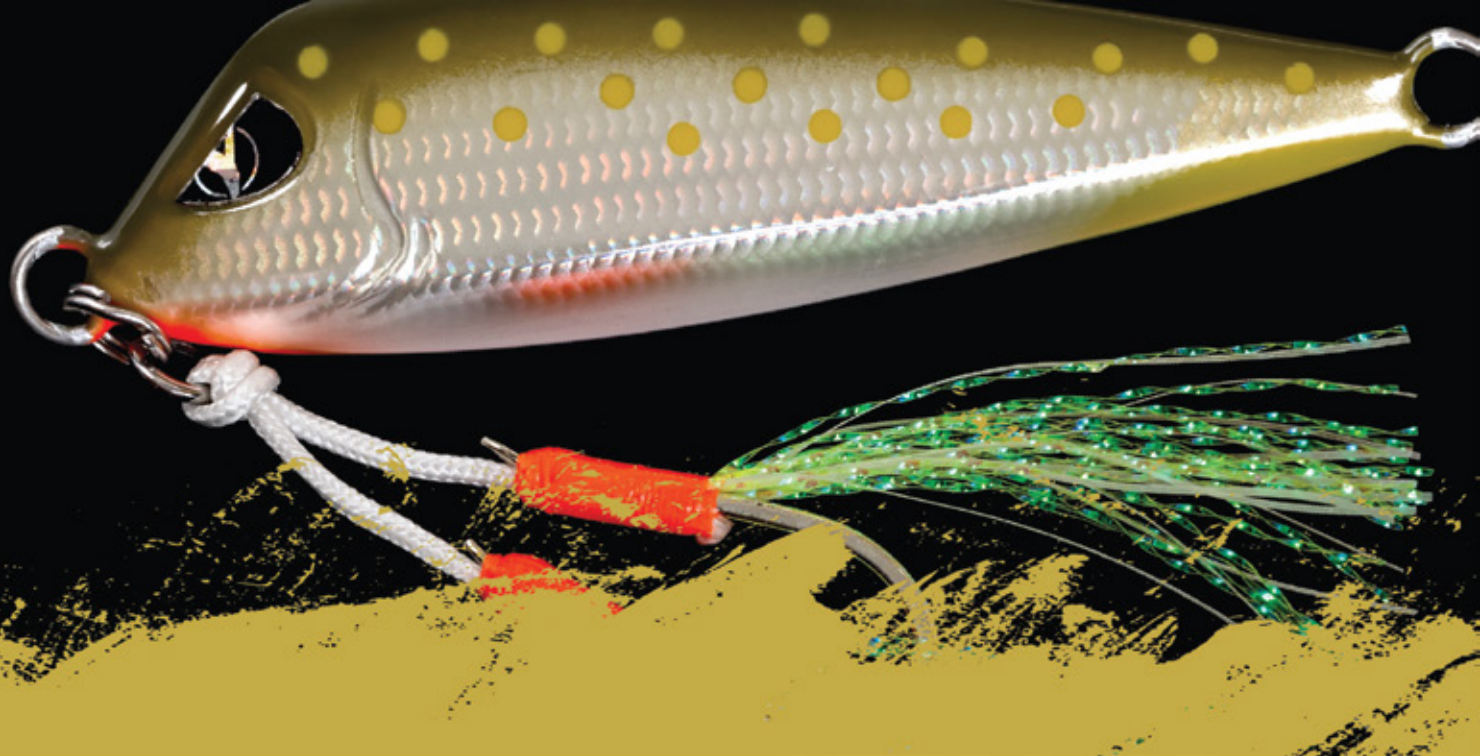
Spotted Stripes
Glow

Weight 10G, 20G, 27G
35G, 45G, 60G
80G



MAHI SLOW JIGS

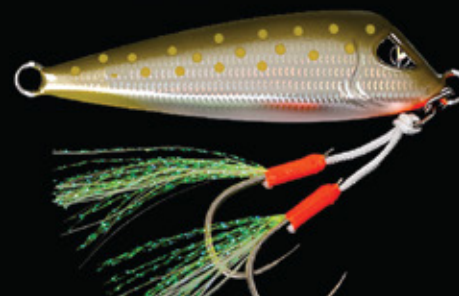
MAHI SLOW JIG



YMS 02

WHITE LEMON

Weight 31G, 41G
61G



YMS 02

SPOTTED TREVALLY

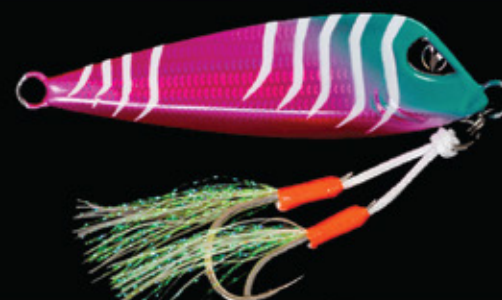
Weight 31G, 41G
61G



YMS 02

NAVY SPOTTED

Weight 31G, 41G
61G



YMS 02

PINK GLOW
STRIPES

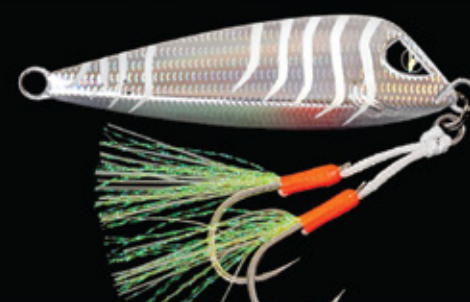
Weight 31G, 41G
61G



YMS 02

GREEN GLOW
STRIPES

Weight 31G, 41G
61G



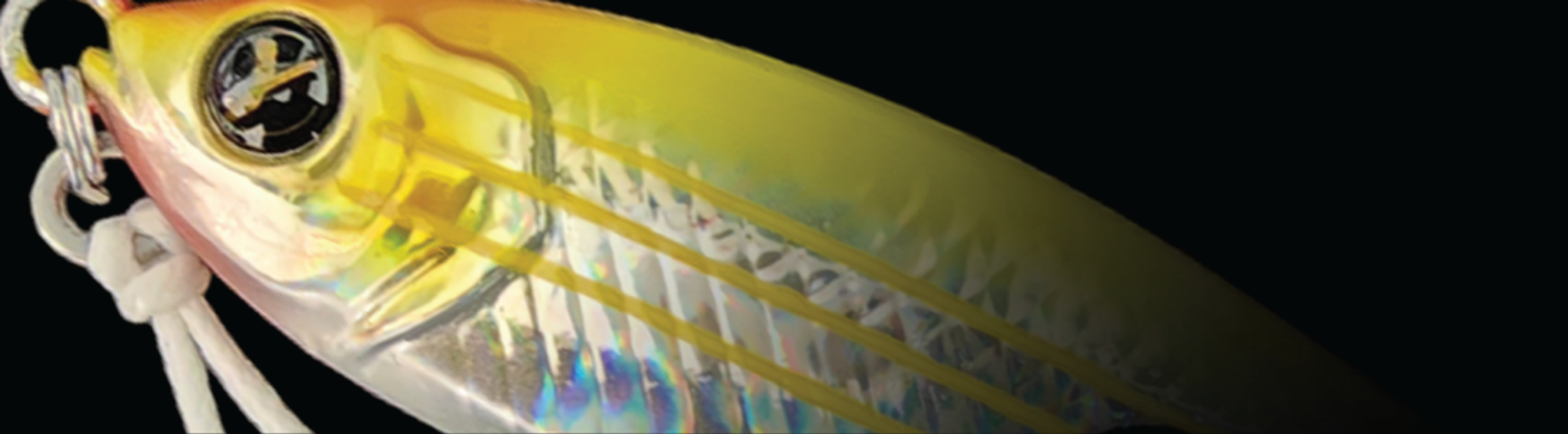
YMS 02

SILVER GLOW
STRIPES

Weight 31G, 41G
61G



GARFA METAL JIG

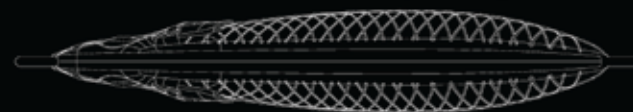


GARFA METAL JIG

The garfah Jig is a small profile, compact shape can be used in a range of conditions especially in high currents due to its design. It's shape has a flattering falling action that appears very much like a dead bait. The compact design of the garfah jig makes it extremely good in high current due to the high metal density and



Rear Balace Shape Design



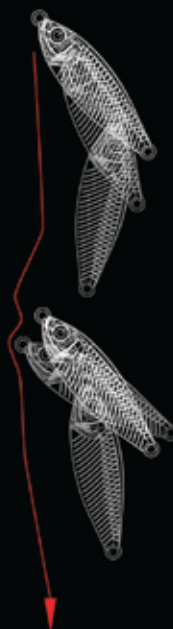
Hydro Dynamic Shape Design



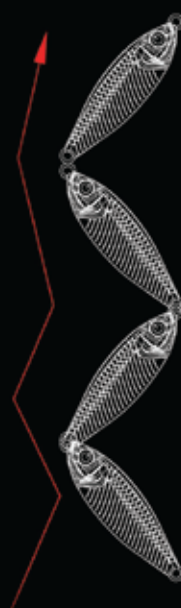
SIZE

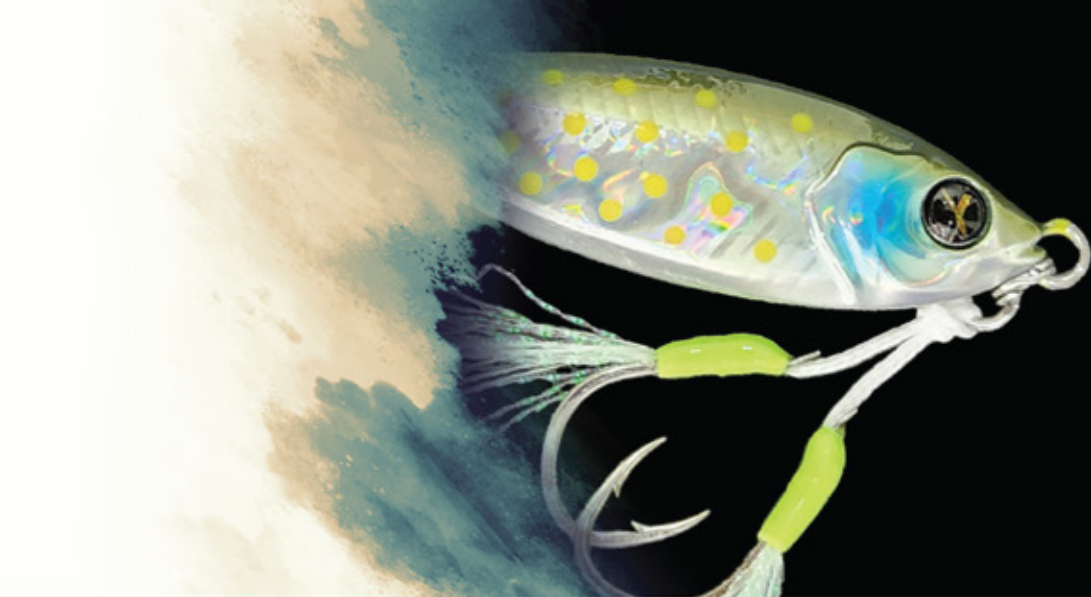


Fall action



Jerk action





GARFA JIG

QARG



QARJ - OBS

ORANGE BLACK
SPOTY

Weight 30G, 50G
80G, 100G



QARJ - ST

SPOTTED TREVALLY

Weight 30G, 50G
80G, 100G



QARJ - SSG

SILVER STRIPES
GLOW

Weight 30G, 50G
80G, 100G



QARJ - GGG

GOLDEN GREEN
GLOW

Weight 30G, 50G
80G, 100G



QARJ - MCS

MULTI COLOR
STRIPES

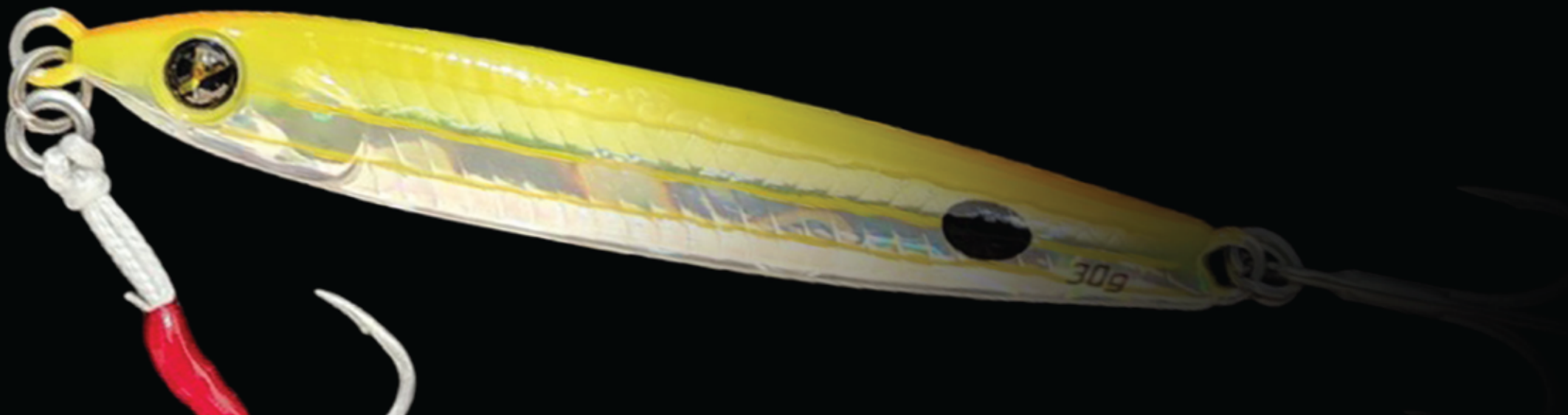
Weight 30G, 50G
80G, 100G



YASI



ANCHOVY JIG



ANCHOVY JIG

Casting & Jigging Games

Anchovy jig was created to mimic the natural bait fish and it is especially designed for shore/ offshore, jigging & casting games.

The taper rear balance weight creates a superb casting distance and wobbling action in every move even with fast retrievals.

It is designed to have side to side rolling, and it wobbles its tails when jerking yet you can do fast and moderate jigging while off shore fishing.

SIZE

15G



30G



45G



60G



Taper Shape Design



Hydro dynamic Shape



Top Water Action



Fall action



Jerk action

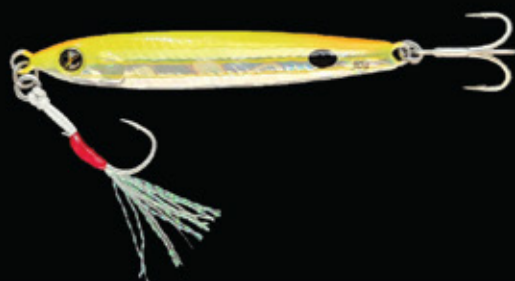
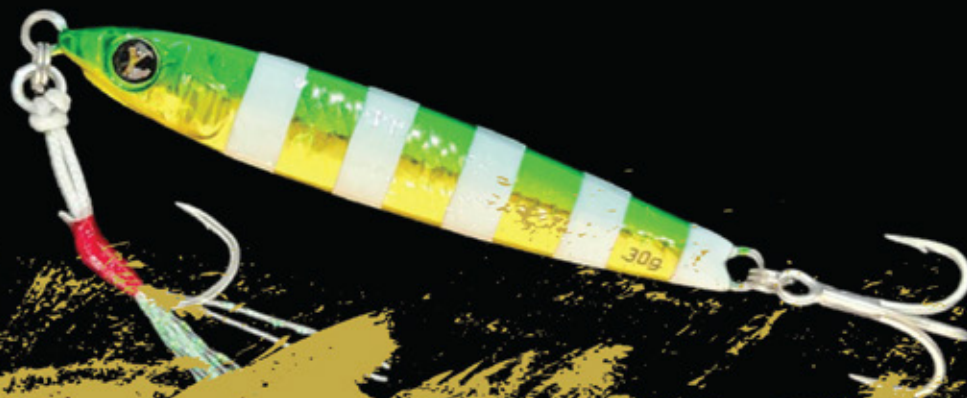


/yasi.abudhabi

WWW.YASI.ABUDHABI

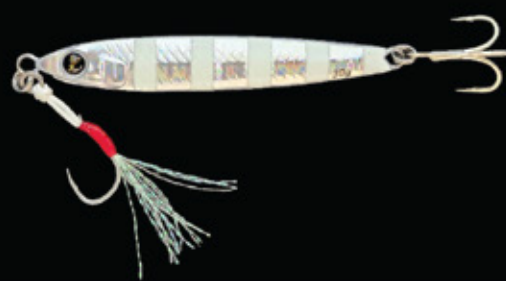
#anchovy_jig

ANCHOVY JIG



**ANCHJ
OBS**
ORANGE BLACK
SPOTY

Weight 15G, 30G,
45G, 60G



**ANCHJ
SSC**
SILVER STRIPES
GLOW

Weight 15G, 30G,
45G, 60G



**ANCHJ
ST**
SPOTTED TREVALLY

Weight 15G, 30G,
45G, 60G



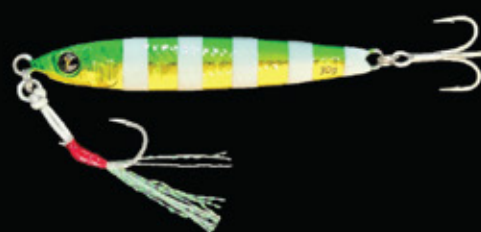
**ANCHJ
GS**
GREEN SARDINE

Weight 15G, 30G,
45G, 60G



**ANCHJ
BS**
BLACK SARDINE

Weight 15G, 30G,
45G, 60G



**ANCHJ
GGG**
GOLDEN GREEN
GLOW

Weight 15G, 30G,
45G, 60G

YASI LINES

Yasi development team spent many years of researching, studying and testing in collaboration with the best Japanese manufacturers to develop superior braided line using the newest technologies that gives anglers the confidence in any fish-fight.

The line is designed to suit both shore and offshore casting. Due to using the new fiber twist technology. Yasi lines proved to be super strong although being extremely thin. The new coating material used in manufacturing Yasi lines eliminates water absorption as well as anglers casting distance into new level. Yasi is using 100% natural pigment in the line coloring to avoid any pollution to our balance sea environment.

- Developed by Yasi
- Made in Japan

AL YASAT

Jigging Game



Al Dhafra

Casting Game



Al yasat

AL YASAT Jigging Game

Descriptions

Yasi development team spent many years of researching, studying and testing in collaboration with the best Japanese manufacturers to develop superior braided line using the newest technologies that gives anglers the confidence in any fish-fight..

The fiber twist formula used in our line is a new technology that gives the braid an outstanding anti-abrasion to give it higher rock friction resistance during bottom jigging. The silky coating layer protects the line to give it a super smooth movement and durability that makes it extremely sensitive to any bite. Moreover, it adds tension without any stiffness that reduces the tendency to cling to the rod guides. As part of our social responsibilities, Yasi is using 100% natural pigment in the line coloring to avoid any pollution to our beloved sea environment.

- Developed by Yasi
- Made in Japan





Size	0.6	0.8	1.0	1.5	2.0
LB	14lb	17lb	22lb	30lb	35lb
Dia	0.07	0.09	0.12	0.16	0.20
Size	2.5	3.0	6.0	8.0	
LB	45lb	50lb	86lb	113lb	
Dia	0.22	0.26	0.40	0.42	

#0.6 14LB 300 meter
Diameter 0.07mm

#0.8 17LB 300 meter
Diameter 0.09mm

#1.0 22LB 300 meter
Diameter 0.12mm

#1.5 30LB 300 meter
Diameter 0.16mm

#2.0 35LB 300 meter
Diameter 0.20mm

#2.5 45LB 300 meter
Diameter 0.22mm

Developed by YASI Made In Japan

Al Dhafra

Casting Game Salt water

White

Descriptions

Yasi development team spent many years of researching, studying and testing in collaboration with the best Japanese manufacturers to develop superior braided line using the newest technologies that gives anglers the confidence in any fish-fight.

The line is designed to suit both shore and offshore casting. Due to using the new fiber twist technology, Yasi lines proved to be super strong although being extremely thin. The new coating material used in manufacturing Yasi lines eliminates water absorption as well as anglers casting distance into new level. Yasi is using 100% natural pigment in the line coloring to avoid any pollution to our balance sea environment.

- Developed by Yasi
- Made in Japan



White PE Line

Size	0.6	0.8	1.0	1.5	2.0
LB	14lb	17lb	22lb	30lb	35lb
Dia	0.07	0.09	0.12	0.16	0.20
Size	2.5	3.0	6.0	8.0	
LB	45lb	50lb	86lb	113lb	
Dia	0.22	0.26	0.40	0.42	

#0.6 14LB 300 meter
Diameter 0.07mm

#0.8 17LB 300 meter
Diameter 0.09mm

#1.0 22LB 300 meter
Diameter 0.12mm

#1.5 30LB 300 meter
Diameter 0.16mm

#2.0 35LB 300 meter
Diameter 0.20mm

#2.5 45LB 300 meter
Diameter 0.22mm

Developed by YASI Made In Japan

YASI PROTESTER TEAM

YASI ProtesterTeam started as a family and what put them together is the love for fishing and loyalty for the brand, they are the backbone of YASI fishing. YASI Protester team plays an important role in the success of our designs and products.



PAUL AJALTOUNI



HASSAN ZAWAD



ABDULRAHMAN HAMMOUD



SALEM AL FALAHI



JAWAD AL ISSA



AHMED FATTANI

